



## Town of Boothbay

### Homeowner's Guide to Vegetation Removal in the Shoreland Zone

Excerpts from the State of Maine Handbook for Shoreland Owners:  
(Boothbay Zoning Ordinance supersedes these guidelines when more restrictive than state standards)

## CLEARING VEGETATION (OTHER THAN FOR COMMERCIAL TIMBER HARVESTING)

### *Clearing Vegetation in Buffer Areas*

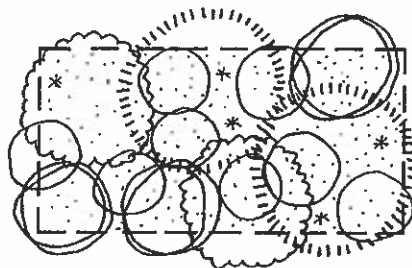
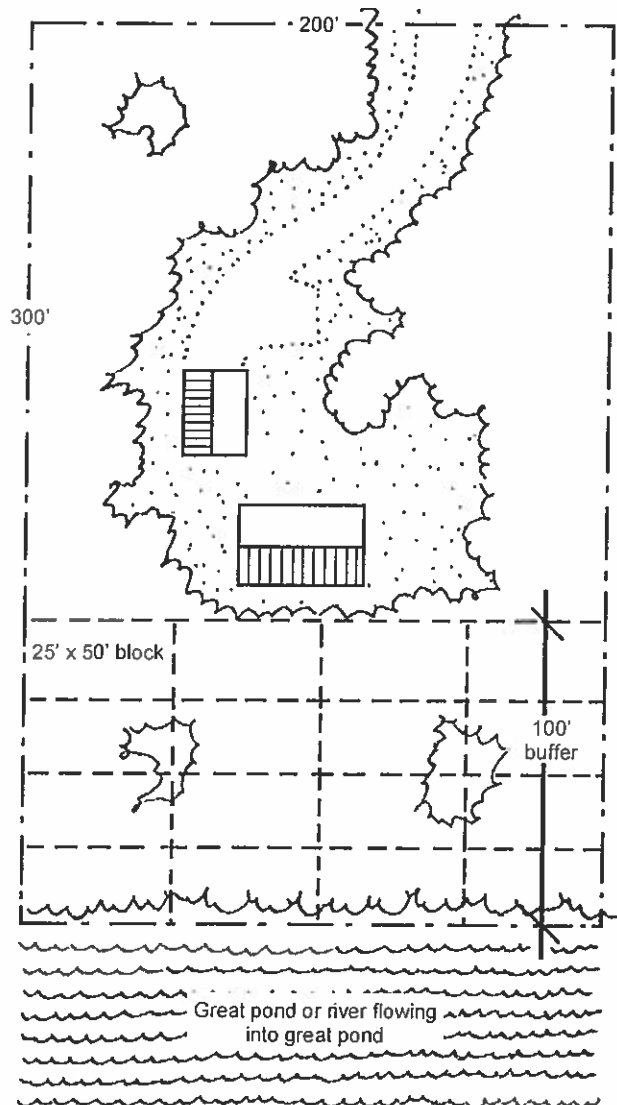
The shoreland zoning law prohibits any vegetation removal within the 75-foot buffer area around a great pond that is zoned for resource protection, except to remove safety hazards.

In all other shoreland areas, no more than 40% of the total volume of trees over 4 inches in diameter in the buffer area may be harvested in any 10 year period. Furthermore, vegetation less than 3 feet in height, including ground-cover, cannot be removed from shoreland buffers. Pruning the lower third of the branches of a tree within the buffer is allowed.

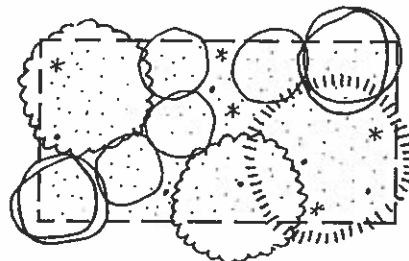
KEY	
Vegetation/Size	Symbol
Stump (0 points)	.
Under 3 ft. high (0 points)	•••••
Saplings to < 2" diameter (0 points)	*
Trees 2" to < 4" diameter (1 point)	○
Trees 4" to < 8" diameter (2 points)	◐
Trees 8" to < 12" diameter (4 points)	◑
Trees over 12" diameter (8 points)	⊙

Every 25' x 50' area within the 100' buffer must contain at least 24 points plus 5 saplings and all vegetation under 3' high. Whenever possible, no more than half of the points counted toward the 24-point threshold within any 25-foot by 50-foot rectangular area may consist of trees greater than 12 inches in diameter.

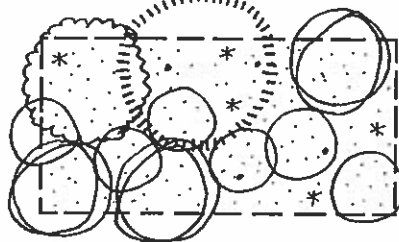
**NOTE:** Towns have the option to use a different point system, which uses a smaller plot and different point assignments. Check with the Town Ordinance or Code Enforcement Officer.



A 25' by 50' area before vegetative clearing. Trees are removed while leaving at least 24 points' worth of trees standing.

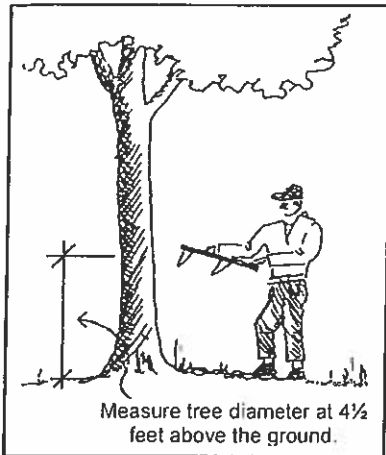


Two clearing options, each with 24 points' worth of trees left.



Within 100 feet of great ponds and rivers flowing into great ponds, and within 75 feet of all other water bodies and streams:

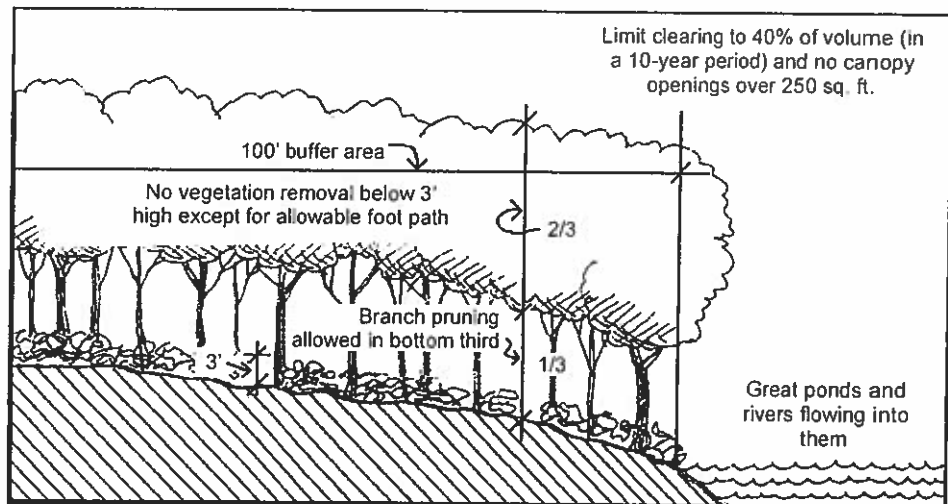
- no opening in the forest canopy may exceed 250 square feet;
- a winding footpath not more than 6 feet wide is allowed,
- selective cutting is allowed, provided a well-distributed stand of trees remains.



The standards establish a rating system which defines a "well-distributed stand of trees." Within the buffer area, the property owner must maintain a minimum number of "points" worth of trees within any 25-foot by 50-foot area, and at least 5 saplings. Twenty-four points worth must be maintained adjacent to great ponds and rivers flowing to great ponds, and 16 points worth must be maintained elsewhere. Points are assigned to trees, depending on their size. The following table shows how points are assigned.

Diameter	Points
Under 2"	0
2" to < 4"	1
4" to < 8"	2
8" to < 12"	4
12" or greater	8

### ***Typical Buffer in a Residential Zone:***



**Clearing Limitations within 100-foot Buffer**

### ***Clearing Beyond the Shoreland Buffer***

Beyond the 75 foot or 100 foot buffers mentioned above, clearing is also limited to no more than 40% of the volume of trees over 4 inches in diameter within a 10 year period. This means that the more land that is cleared for buildings, lawn, and driveways, the less can be thinned elsewhere. Further, cleared openings cannot exceed 25% of the lot area within the shoreland zone, or 10,000 square feet, whichever is greater. (Note: this 25% provision does not apply in the General Development or Commercial Fisheries/Maritime Activities districts)

